



Alexandra Tower, 19 Princes Parade, Liverpool

£995 PCM

This is your chance to live in a prime waterfront location, right on Princes Dock in Liverpool. This iconic and imposing development has a range of 1 and 2-bedroom apartments available and is in an ideal location for students and commuters alike.

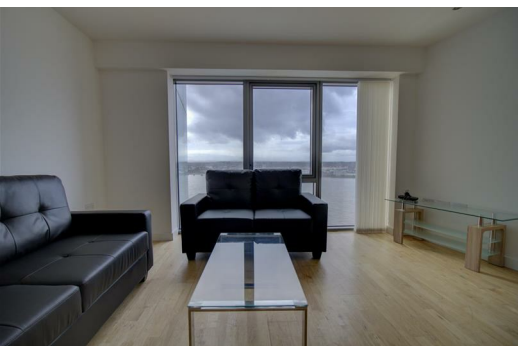
This apartment is absolutely spot-on. Inside you'll find a bright open-plan kitchen/lounge/dining room with huge windows. The kitchen is super-sleek with wooden flooring, white cabinets, chrome handles and an integrated hob/oven. The bedrooms are good sized doubles with plush carpeting underfoot - the perfect haven to relax away from the hustle and bustle of the city - and the modern, tiled bathrooms are equally as luxurious.

A short stroll from your apartment takes you into the heart of Liverpool, where you'll have more bars, restaurants, eateries and shops than you could shake a stick at.

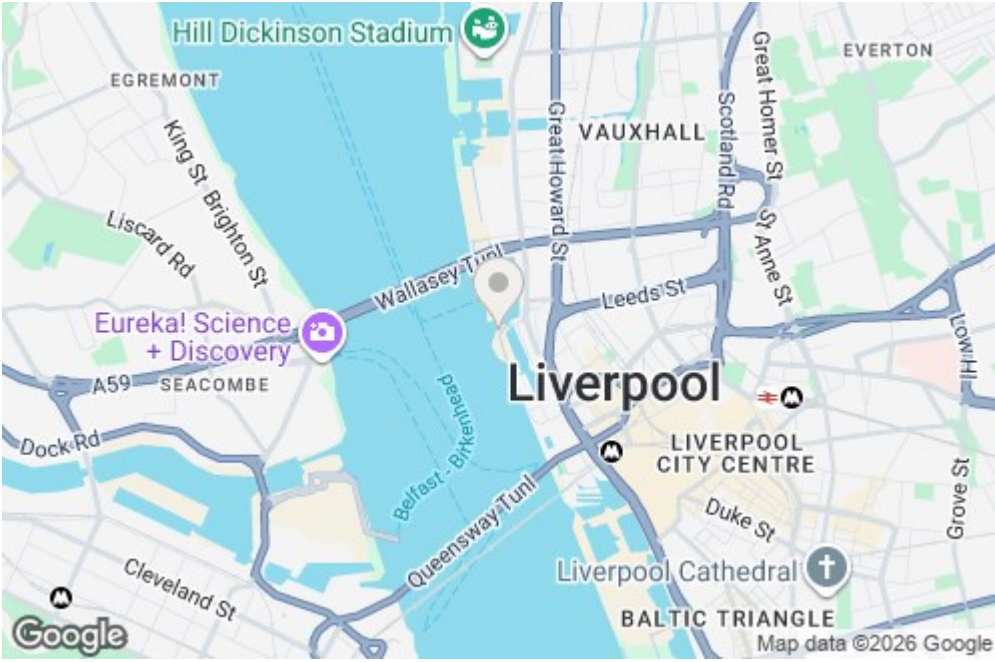
If you'd like to wander further afield, you have a huge range of transport links at your fingertips, along with easy access to the whole of Liverpool and beyond - you really couldn't be more perfectly located. With a bus stop practically on your doorstep and James Street train station just a short stroll away, commuting is a breeze.

Properties like this tend to get snapped up quickly, so make sure you give us a call if you fancy a closer look. And just so you know, the images are for marketing purposes only, so the fixtures and fittings may vary.

Available now
Deposit - £1,210
Council Tax Band - D
Furnished



156, Alexandra Tower 19 Princes Parade, Liverpool, Merseyside, L3 1BF



Energy Efficiency Rating		Environmental Impact (CO ₂) Rating	
Current	Potential	Current	Potential
105-120 kWh/m ² (A)	92-104 kWh/m ² (A)	100 gCO ₂ /m ² (A)	82-94 gCO ₂ /m ² (A)
81-104 kWh/m ² (B)	72-91 kWh/m ² (B)	95 gCO ₂ /m ² (B)	77-90 gCO ₂ /m ² (B)
66-80 kWh/m ² (C)	55-71 kWh/m ² (C)	90 gCO ₂ /m ² (C)	72-89 gCO ₂ /m ² (C)
51-65 kWh/m ² (D)	40-54 kWh/m ² (D)	85 gCO ₂ /m ² (D)	67-88 gCO ₂ /m ² (D)
36-50 kWh/m ² (E)	25-39 kWh/m ² (E)	80 gCO ₂ /m ² (E)	62-87 gCO ₂ /m ² (E)
21-35 kWh/m ² (F)	10-24 kWh/m ² (F)	75 gCO ₂ /m ² (F)	57-86 gCO ₂ /m ² (F)
6-20 kWh/m ² (G)	1-9 kWh/m ² (G)	70 gCO ₂ /m ² (G)	52-85 gCO ₂ /m ² (G)